

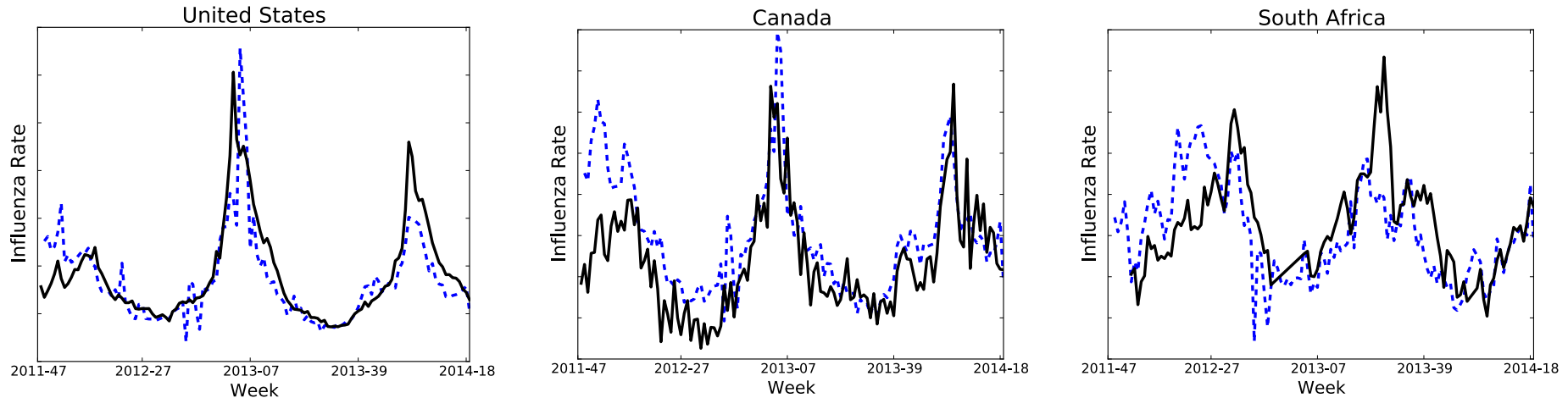


3<sup>rd</sup> International Conference on Digital Disease Detection

Michael Paul

Johns Hopkins University

# Influenza in Twitter



Tweets can estimate influenza prevalence

# HealthTweets.org

Health Tweets

Home

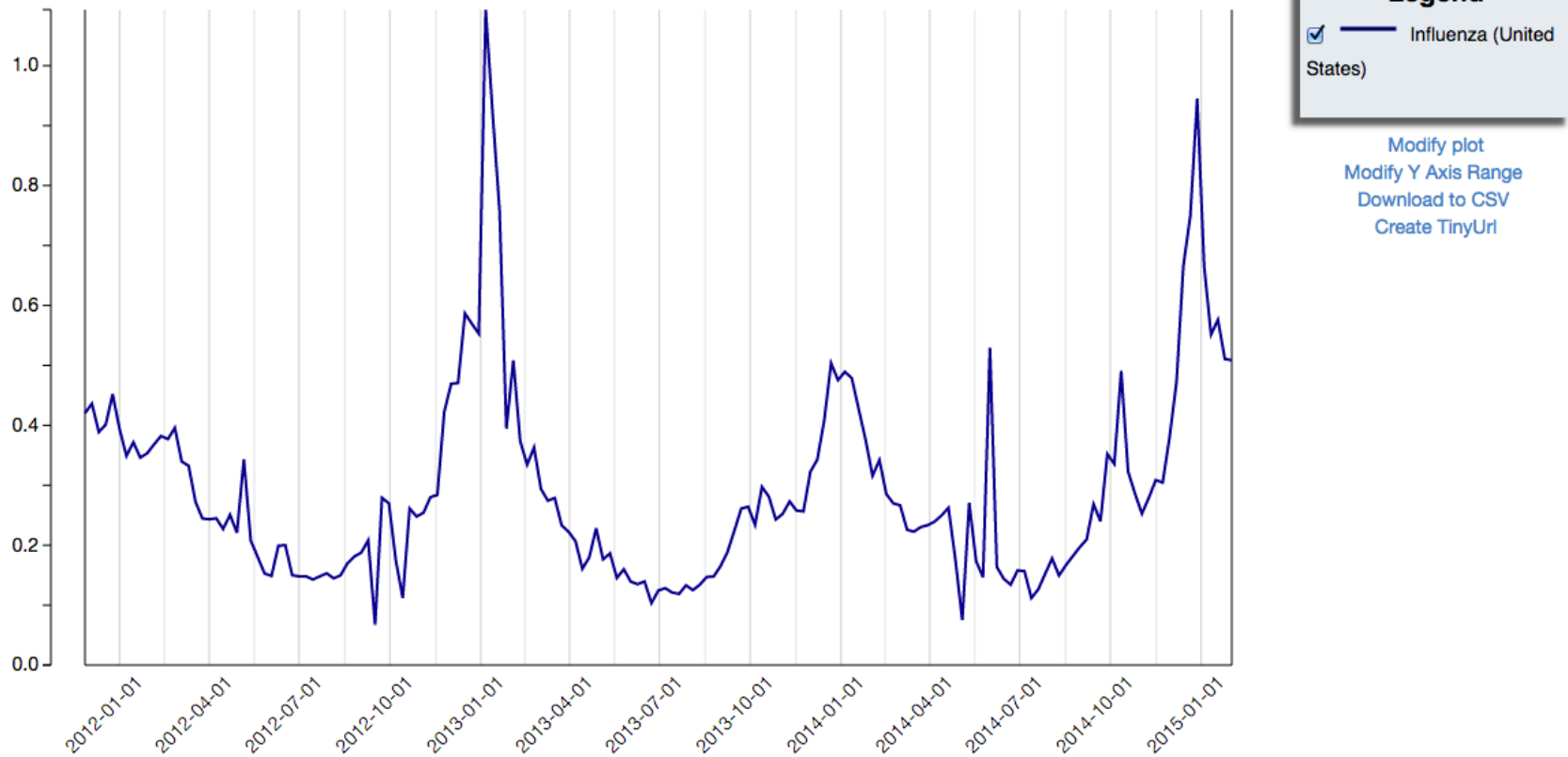
About

Trends

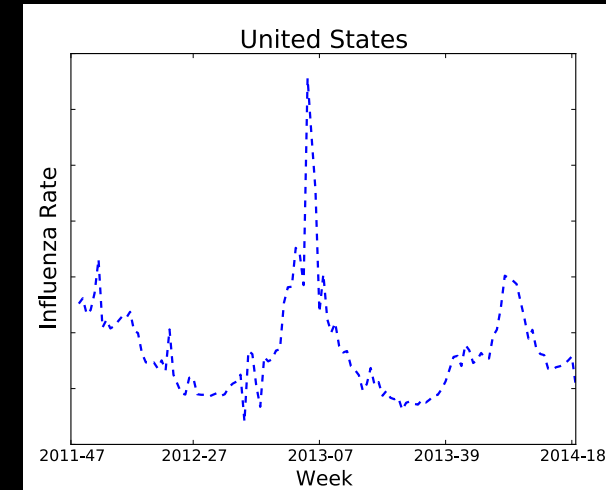
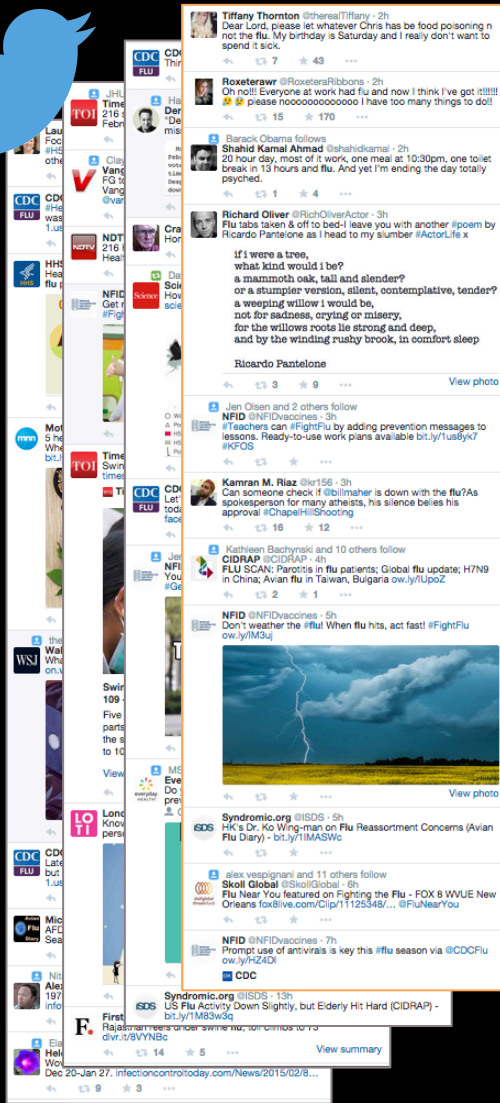
Flu Dashboard

My Account

Tracking Health Trends via Social Media

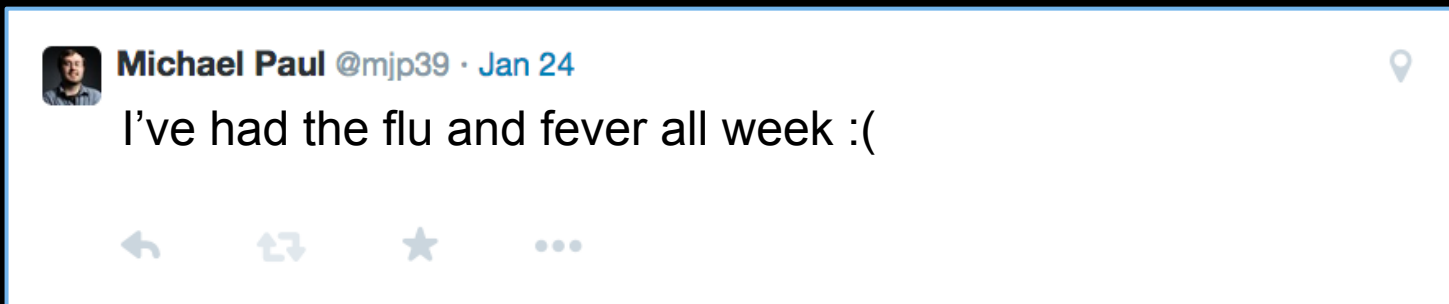


# Influenza in Twitter



# Influenza in Twitter

Look for tweets that indicate **infection**:



# Infection vs Awareness

“think I’m coming down with the flu”

VS

“tired of hearing about the flu”

# Infection vs Awareness

“think I’m coming down with the flu”

VS

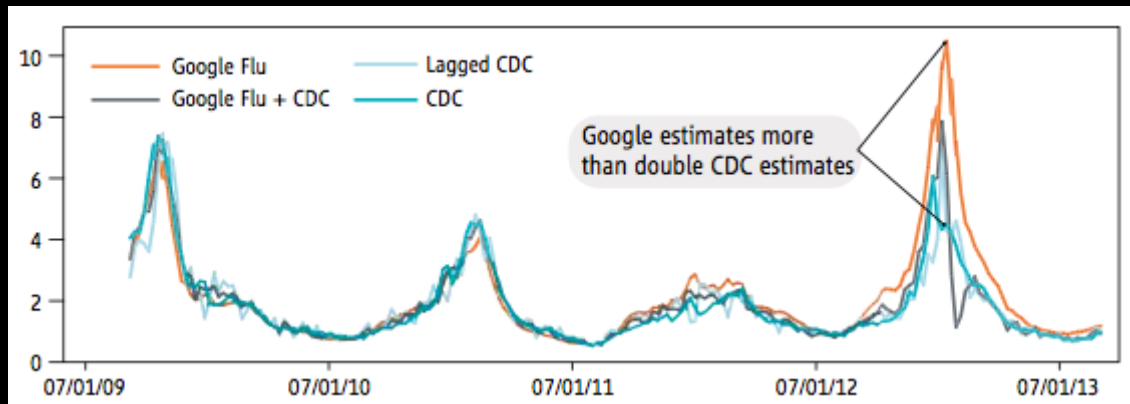
“tired of hearing about the flu”

The user probably has the flu.

- These are the tweets we want to count for surveillance!

# Infection vs Awareness

This distinction matters!



google.org

From Lazer et al.,  
*Science*, 2014

Google concluded that media attention contributed to their overestimate in 2012-2013



# Tweet Classification

Cascade of 3 logistic regression classifiers:

- about health **vs** not about health
- about flu **vs** not about flu
- flu infection **vs** flu awareness

# Tweet Classification

Estimated weekly flu rate:

$$\frac{\# \text{ tweets about flu infection that week}}{\# \text{ of all tweets that week}}$$

This yields estimates of infection

# Infection vs Awareness

“think I’m coming down with the flu”

VS

“tired of hearing about the flu”

The user is aware of the flu.

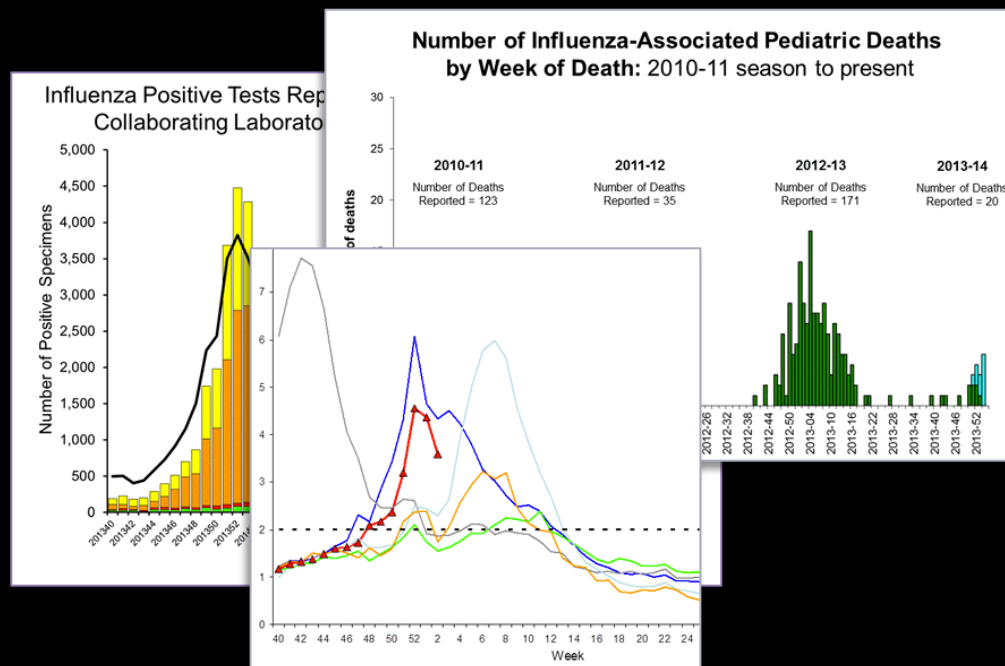
- New question: what can we learn from tweets like this?

# Influenza Awareness

- Public awareness of a disease is a major factor that can influence its spread
- Officials must often manage public perceptions to manage outbreaks

# Influenza Awareness

- We currently lack systems for up-to-date monitoring of influenza awareness



# Awareness in Twitter

We can estimate levels of awareness using our tweet classifiers:

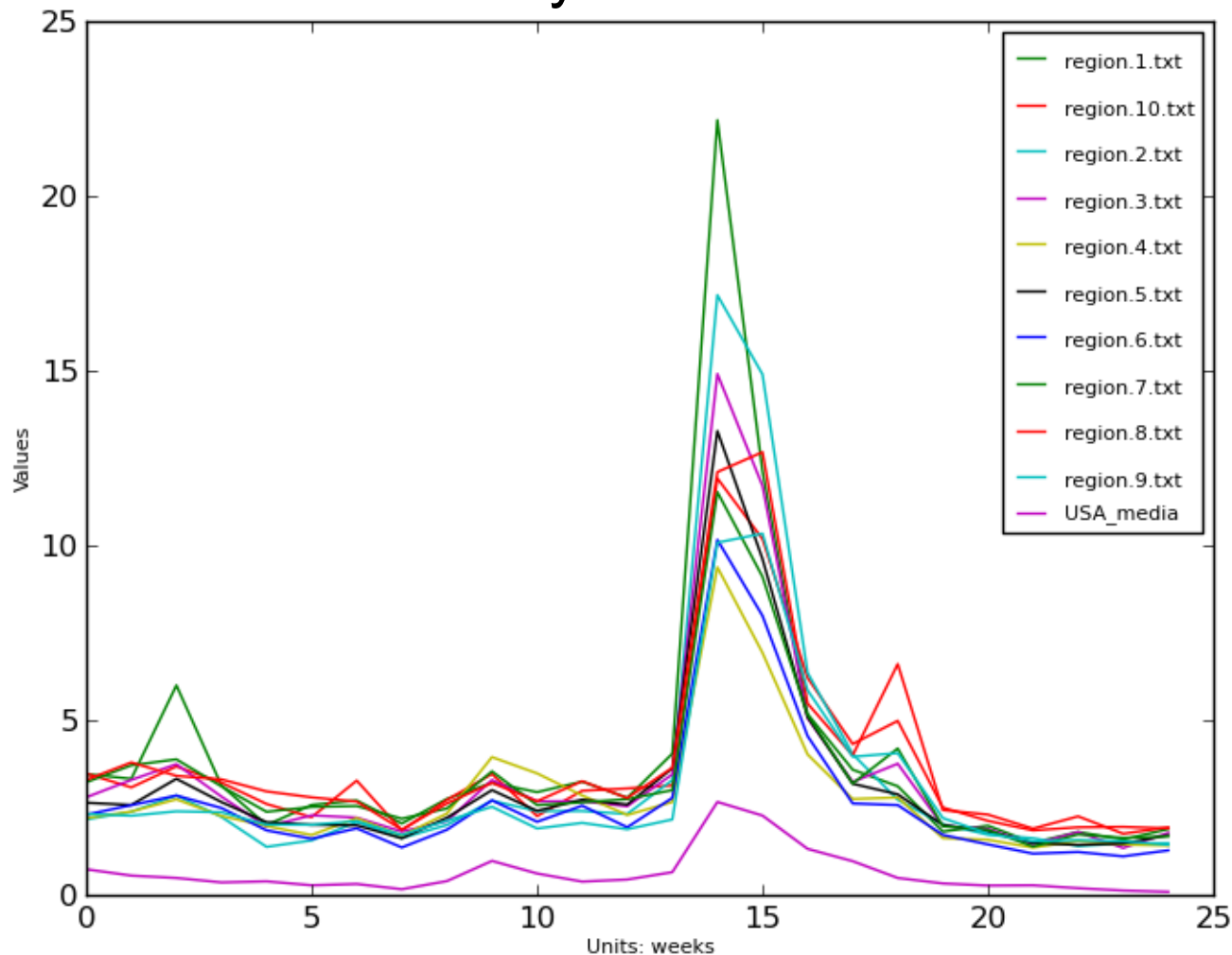
- about health **vs** not about health
- about flu **vs** not about flu
- flu infection **vs** flu awareness

# Comparing Trends

- Twitter trends for **infection** and **awareness**
  - 9/30/2012 – 5/31/2013
- 10 HHS regions in United States

# 2012-2013 Flu Season

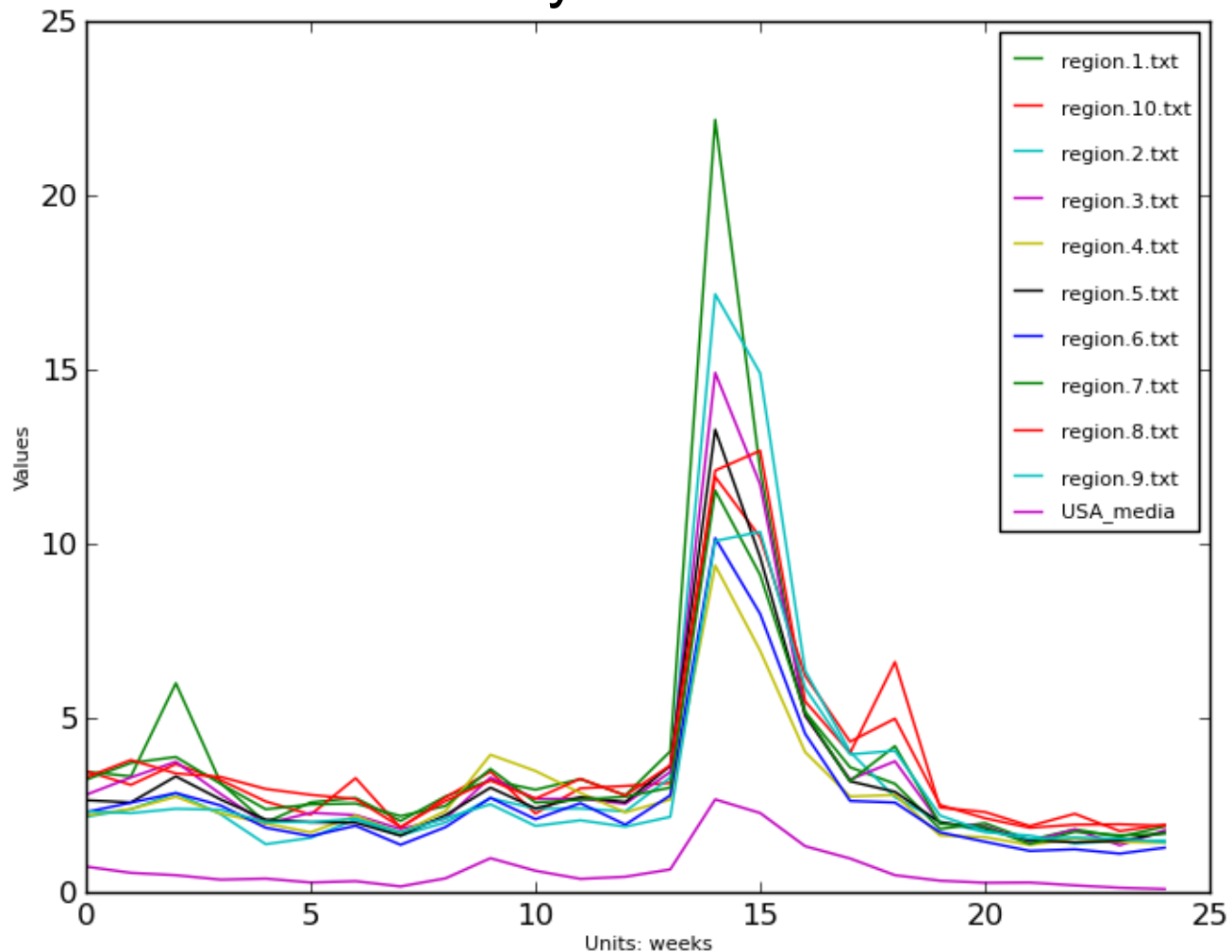
## Weekly awareness:





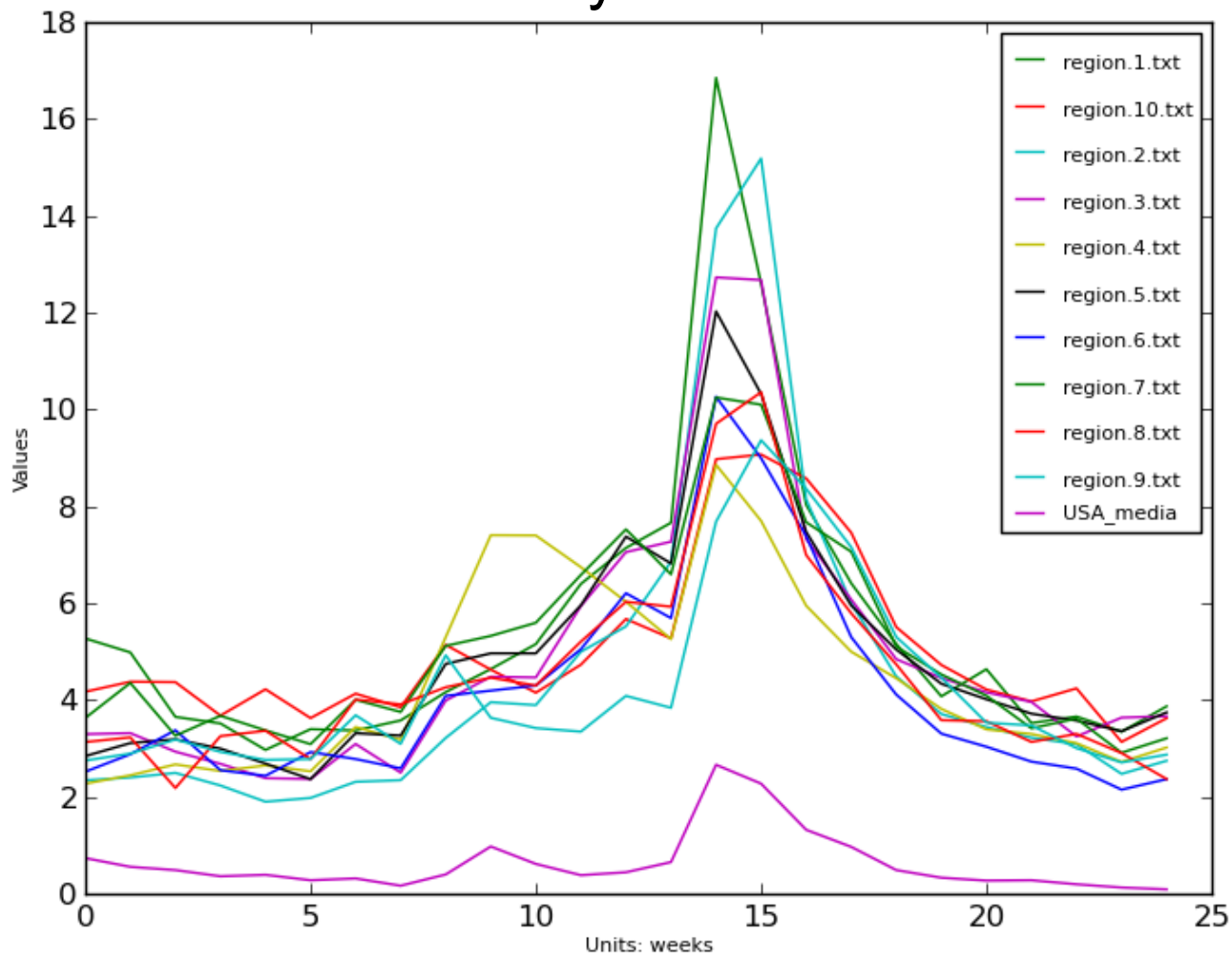
# 2012-2013 Flu Season

## Weekly awareness:



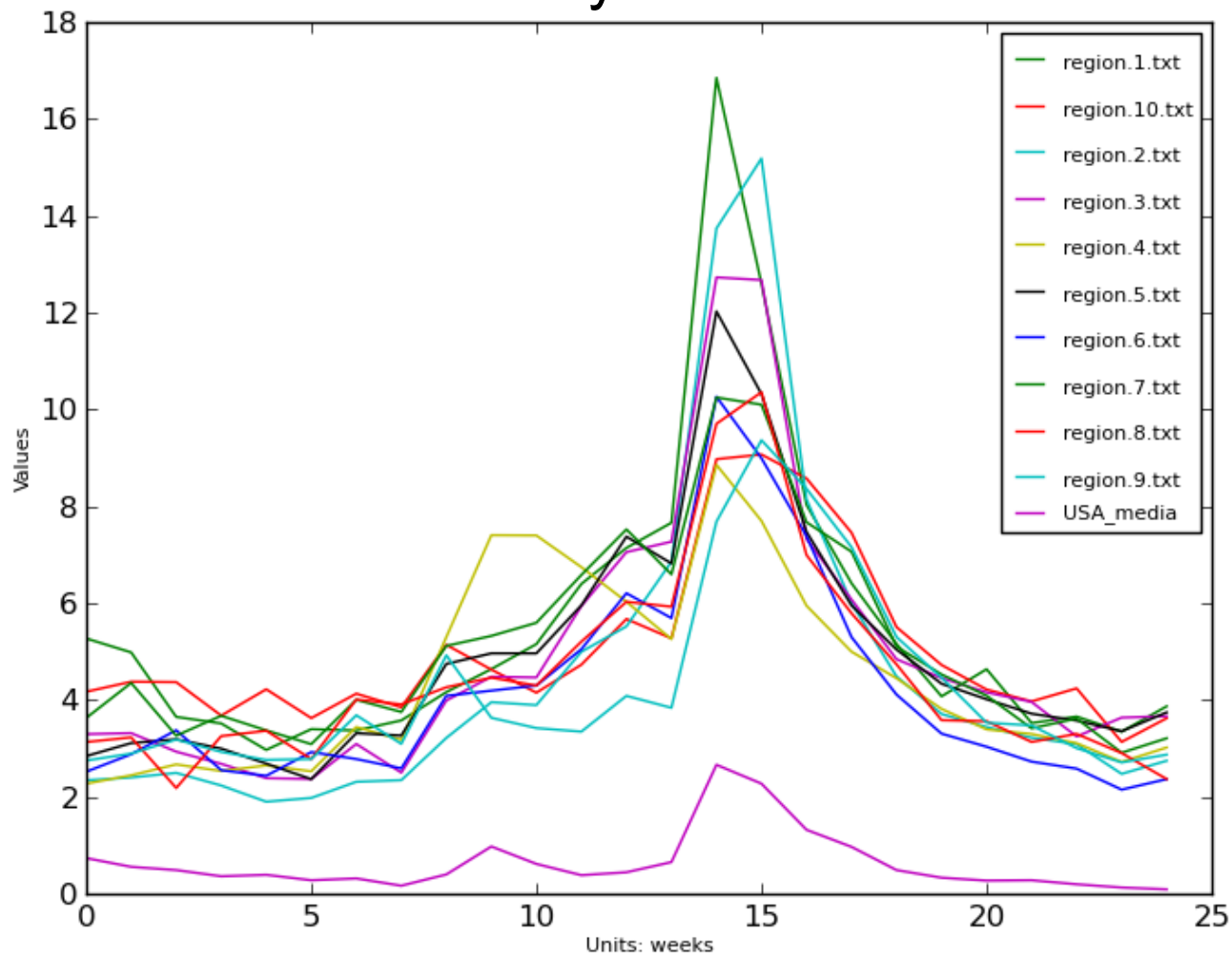
# 2012-2013 Flu Season

Weekly infection:



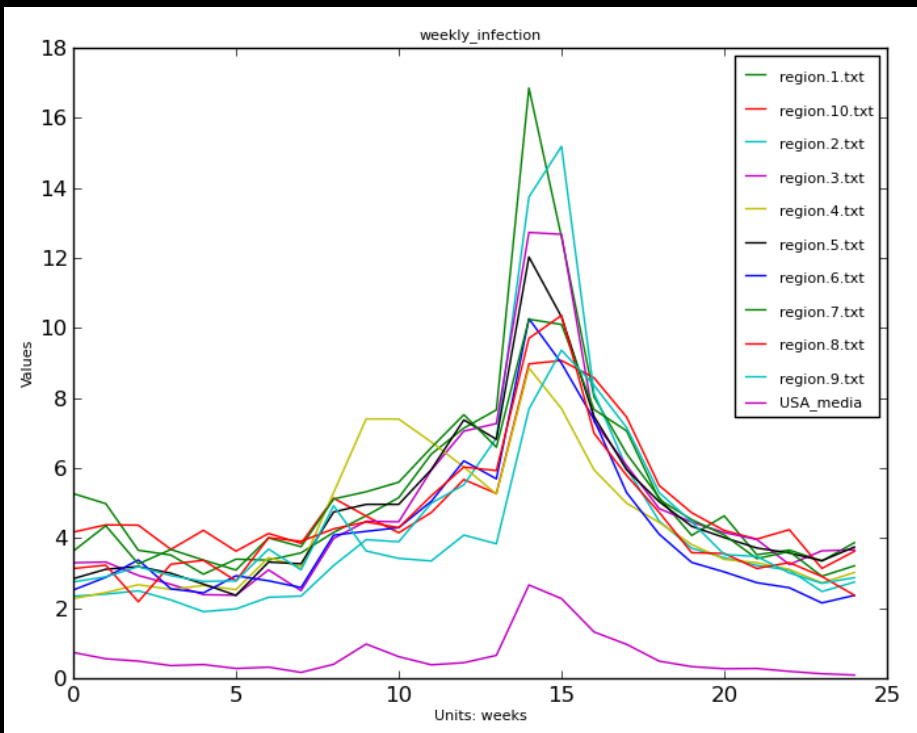
# 2012-2013 Flu Season

## Weekly infection:

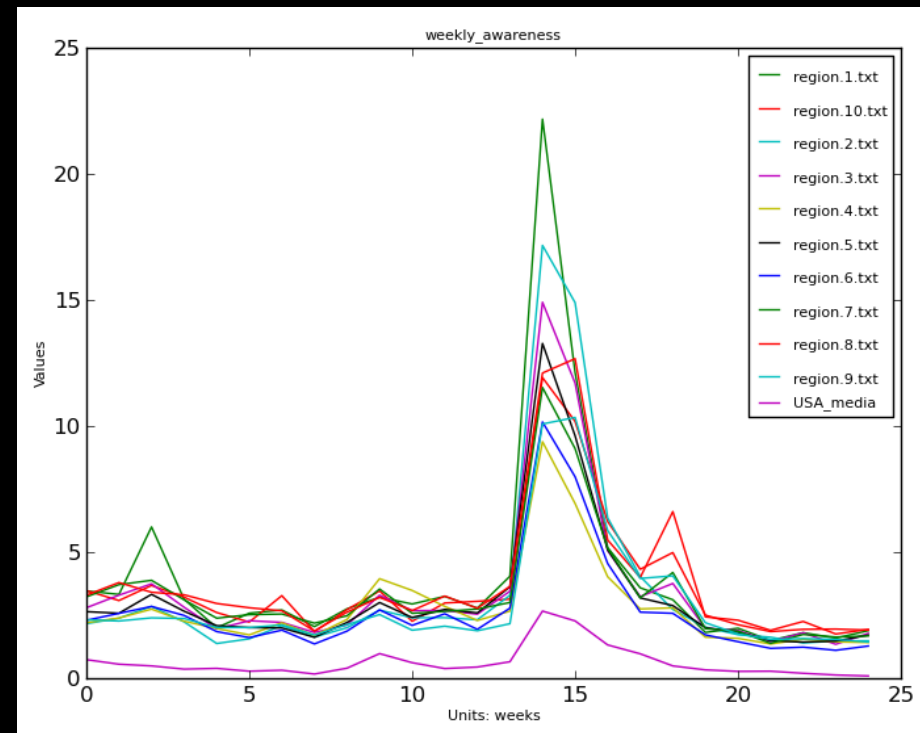


# 2012-2013 Flu Season

Infection:



Awareness:



# Conclusion

- Public awareness of disease is important
- Tweet volume can measure awareness
- Awareness, infection have different trends